



LOCATED IN THE MOST DESIRABLE AREA,  
IN POSSIBLY THE MOST DESIRABLE CITY IN  
THE WORLD, THIS MAGNIFICENT GRADE 2  
LISTED PROPERTY IS QUITE UNIQUE

THIRTY SIX  
CHESTER ROW  
BELGRAVIA : LONDON



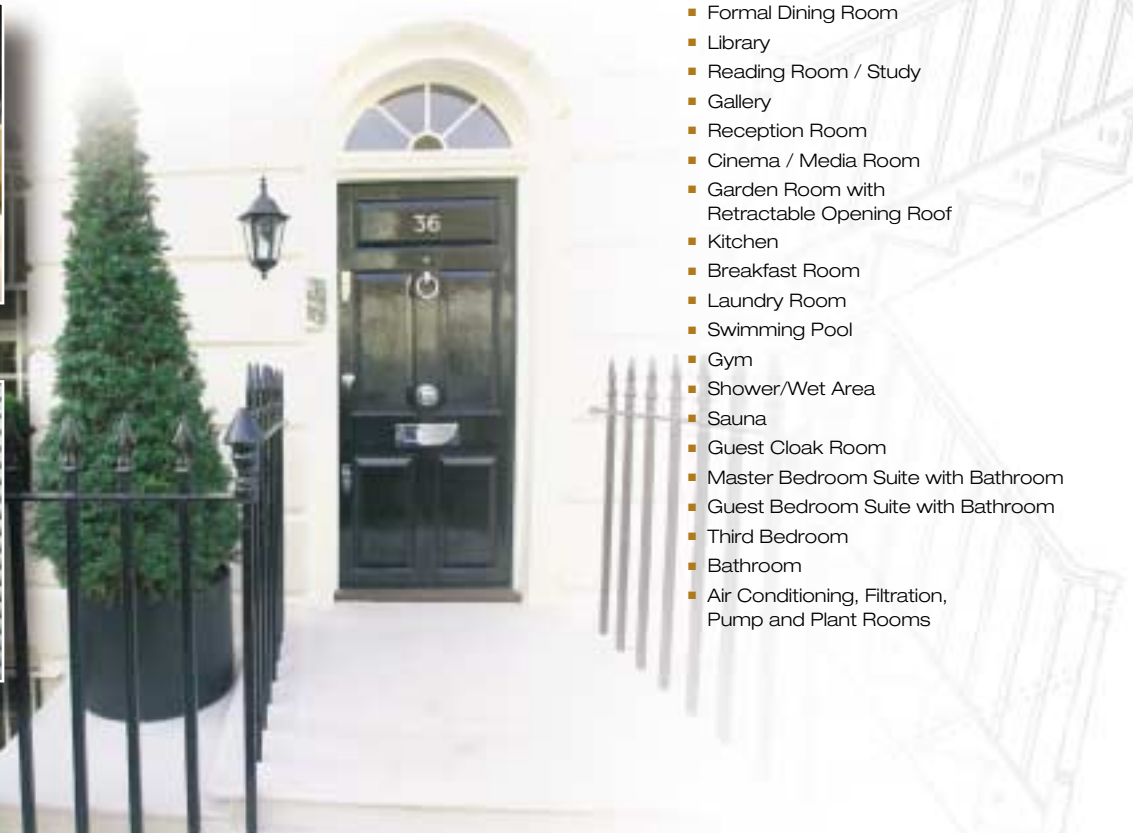
# THIRTY SIX CHESTER ROW BELGRAVIA LONDON



Situated in the highly sought after area of Belgravia, THIRTY SIX CHESTER ROW has the benefit of being where Belgravia, Chelsea and Knightsbridge all meet together as one.

## accommodation

- Entrance Hall
- Formal Dining Room
- Library
- Reading Room / Study
- Gallery
- Reception Room
- Cinema / Media Room
- Garden Room with Retractable Opening Roof
- Kitchen
- Breakfast Room
- Laundry Room
- Swimming Pool
- Gym
- Shower/Wet Area
- Sauna
- Guest Cloak Room
- Master Bedroom Suite with Bathroom
- Guest Bedroom Suite with Bathroom
- Third Bedroom
- Bathroom
- Air Conditioning, Filtration, Pump and Plant Rooms







The famous facilities of Sloane Square, Sloane Street, Elizabeth Street and the infamous King's Road are all within easy reach, together with THIRTY SIX CHESTER ROW neighbouring the also exclusive Eaton and Chester Squares and their surroundings.

THIRTY SIX CHESTER ROW BELGRAVIA





THIRTY SIX CHESTER ROW BELGRAVIA

line of the  
back 50mm from the  
line of the base units  
Dashed line indicates  
the line of the granite  
worktop 25mm  
in front of the base  
units



Using the highest quality of materials and appliances, this historic freehold house has undergone a complete and sensitive renovation & refurbishment programme, taking over two and a half years from its original conception. This has produced a unique residential space, carefully fusing together Traditional and Contemporary styles needed for today's discerning but modern living standards.





THIRTY SIX CHESTER ROW has been created to enable over 2,500 square feet to be solely dedicated for the use of entertaining by providing accommodation that includes a formal dining room, library, reception room (with ceilings over 15 feet high), cinema, garden room (with retractable roof), gym, sauna and swimming pool.



THIRTY SIX CHESTER ROW BELGRAVIA

1200mm thick lightweight  
insulated panel  
recessed into a channel  
channel. The channel is to  
be flush with the wooden  
floor. Glass to be fixed on  
chrome brackets with angled  
sliding.

Front face of existing  
platform structure to  
be clad in timber  
sliding to match the  
design.

THIRTY SIX CHESTER ROW is equipped with comprehensive and individually designed fully integrated audio, visual, lighting, air conditioning, security and fire control systems throughout.








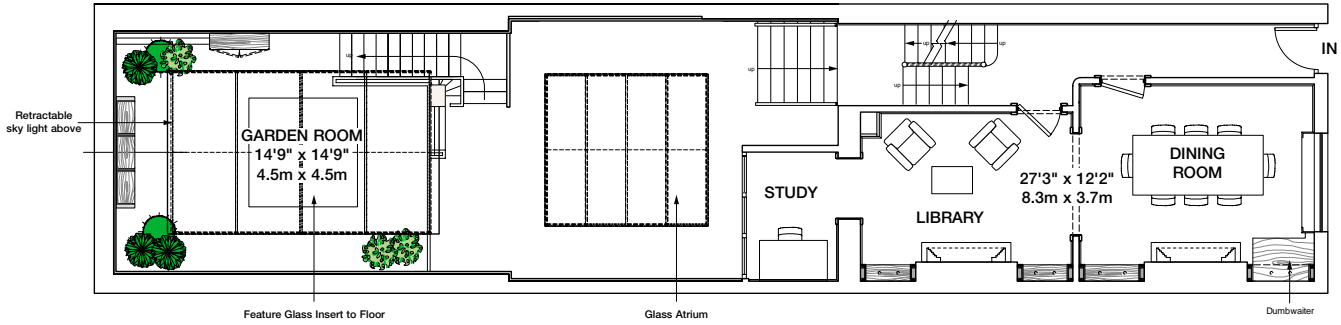
## Amenities

- Cinema ▪ Swimming Pool ▪ Gym ▪ Sauna
- Water Jet Swim System ▪ Steam Shower ▪ Hydrotherapy Baths
- Electronic Retractable Opening Roof
- Audio & Visual System Throughout Including Speakers by Kef and Sonance and Denon DVD, Amp and Tuner
- Integrated Zoned Lighting System Throughout
- Hi Speed Media Link Throughout ▪ Network Ready
- Aqua Vision T.V. in Master Bathroom ▪ Plasma & LCD screens
- Electronically Opening Roof Light Windows and Blinds in Bedroom Ceilings on Upper Floors
- Colour Entry Phone System with Telephone and Television Link Up ▪ Air Conditioning & Heating Throughout
- Security Alarm ▪ Fire Alarm and UltraFog Sprinkler System
- Under Floor Heating in Kitchen, Bathrooms & Gym Area
- Gaggenau, Miele, LG and Fischer & Paykel appliances including Integrated Multimedia Digital Internet Fridge with T.V./Radio/Audio/Email/Web Access/Note Pad/Camera/Calendar etc, Oven, Hob, Hood, Gas Burners, Griddle, Wok Burner, Steamer, Combination Microwave, Wine/Champagne Coolers, Dishwasher, Washing & Drying Machines, Krups Cappuccino Machine, Electronic Scales
- Dumb Waiter Food Lift between Kitchen & Dining Room
- The highest quality materials have been used in the construction including Glass, Uba Tuba Granite Worktops, Volcanic Lava Bowls, Jerusalem Desert Gold Limestone, Porceline Tiles, Stainless Steel and Walnut and Oak Throughout.

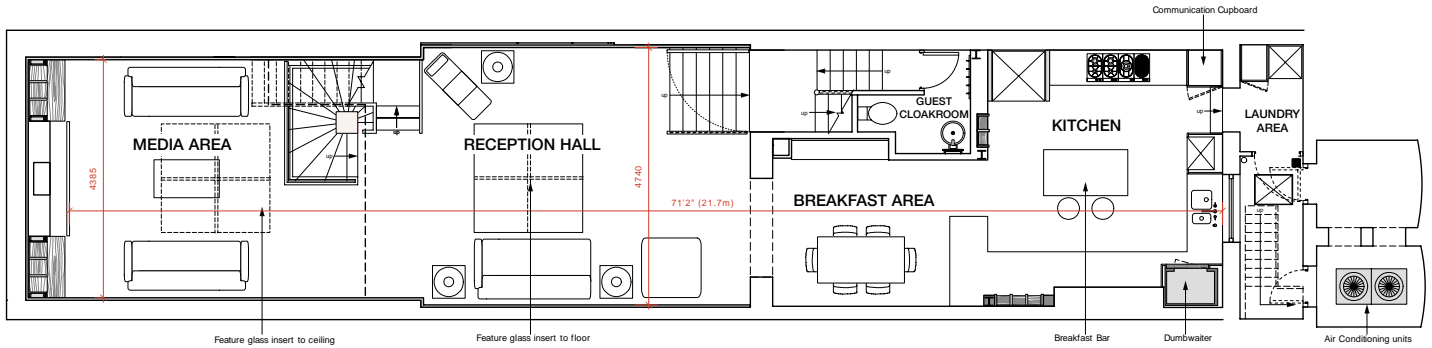


The audio, lighting and ambience of the property can be controlled remotely from anywhere within the property using the "Pronto" hand held console.

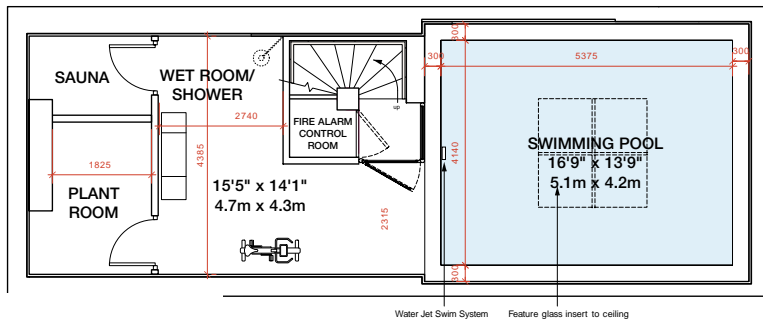
THIRTY SIX CHESTER ROW BELGRAVIA



GROUND FLOOR



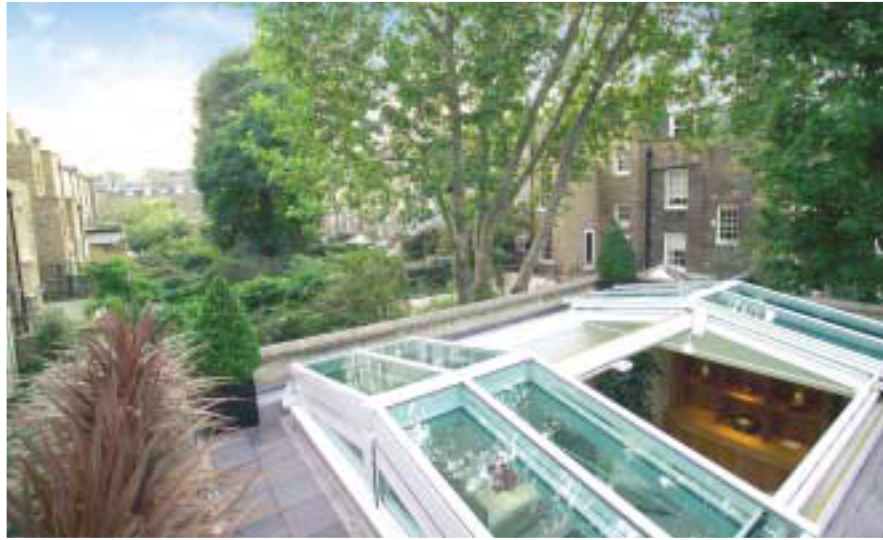
LOWER GROUND FLOOR



APPROXIMATE GROSS INTERNAL AREA  
3,515 SQUARE FEET (326 SQUARE METRES)  
(EXCLUDING VAULTS)

BASEMENT





LOCAL AUTHORITY: CITY OF WESTMINSTER

TENURE: FREEHOLD

PRICE: ON APPLICATION



1. No description or information given by Knight Frank LLP or Ayrton Wylie whether or not in these Particulars and whether written or verbal ("information") about the property or its condition or its value may be relied upon as a statement or representation of fact. Neither Knight Frank LLP nor Ayrton Wylie have any authority to make any representations and accordingly any information given is entirely without responsibility on the part of the agents or the seller(s) or lessor(s).

2. These particulars do not constitute, nor constitute part of, an offer or contract, nor shall they merge in any offer or contract which may hereafter be made between the sellers or lessors and the recipient of the information.

3. The photographs show only certain parts of the property at the time they were taken. Any areas measurements or distances given are approximate only.

4. Any reference to alterations to, or use of any part of the property is not a statement that any necessary planning, building regulations or other consent has been obtained. These matters must be verified by any intending buyer or lessee.

5. Any buyer or lessee must satisfy himself by inspection or otherwise as to the correctness of any information given.

Knight Frank LLP is a limited liability partnership registered in England with registered number OC305934.  
Registered office: 20 Hanover Square, London W1S 1HZ





